

# SAFE HOUSING SAVES LIVES



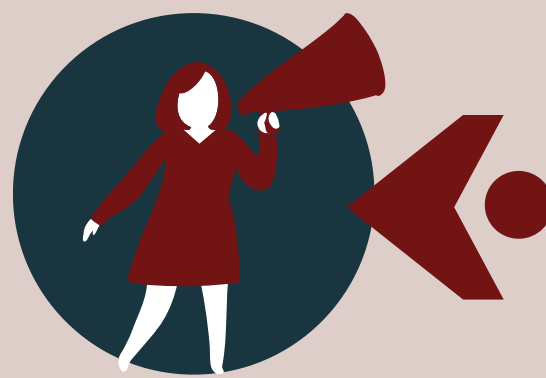
YET ACROSS CANADA AND BC, WOMEN, GIRLS, AND GENDER-DIVERSE PEOPLE FLEEING VIOLENCE ARE BEING LEFT WITHOUT A PLACE TO GO

OVER 60%

of survivors of intimate partner violence report housing instability after leaving abuse

Women's transition houses routinely operate beyond capacity

Second stage housing is the critical bridge between crisis shelter and permanent housing, yet it's chronically underfunded and scarce



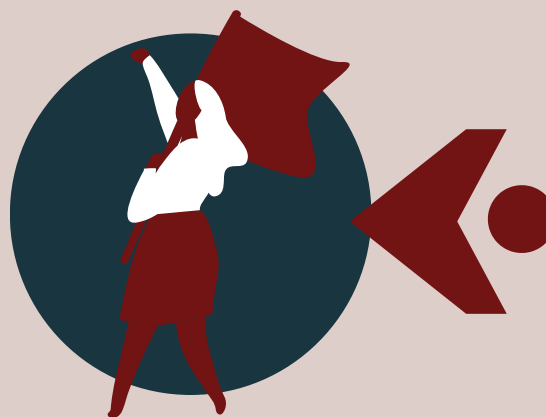
## GENDER-BASED VIOLENCE

(GBV) remains one of the most urgent human rights crises in Canada



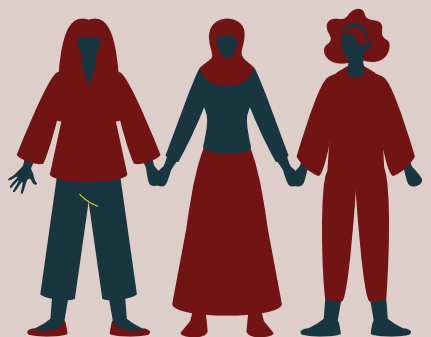
## EVERY DAY

women and gender-diverse people are turned away from shelters because there's no safe, affordable housing to move into



## INDIGENOUS WOMEN

and 2SLGBTQQIA+ people are disproportionately affected, facing intersecting barriers to housing and safety



AHMA calls on provincial and federal governments to declare housing for survivors of gender-based violence a national emergency priority, and to invest in sustainable, Indigenous-led housing solutions.



HOUSING  
is  
SAFETY

## INDIGENOUS WOMEN

ARE  
**12X**  
MORE LIKELY

To be murdered or go missing

## ADDRESSING GBV

requires coordinated housing policy, funding, and accountability across all levels of government



## WORKING TOGETHER

Without sustainable funding, operating supports, and culturally appropriate housing, BC cannot meet its GBV prevention goals